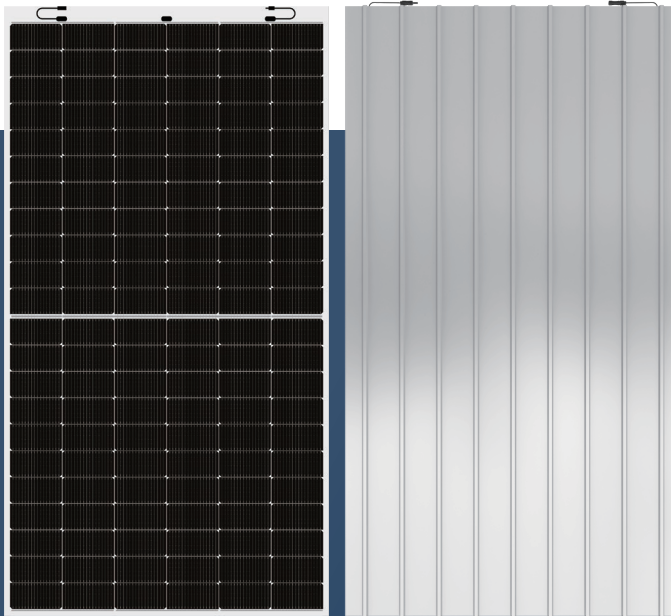


Lightweight
Half-Cell Module
DAS-LH132PA

455W~475W



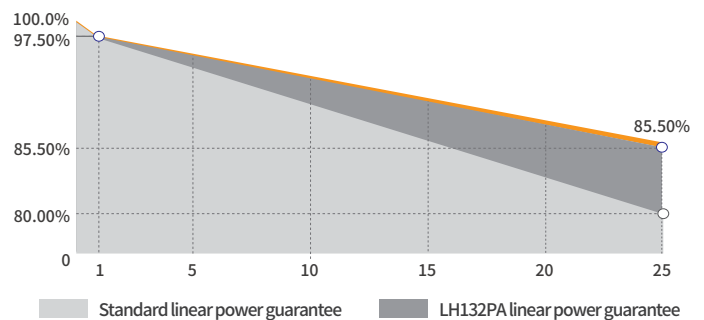
Key Features

- Lightweight**
Optimized composite materials, 70% lighter at the same power
- Half Cell, SMBB Technology**
Series-then-parallel cell connection design, more reliable soldering technology
- Low NMOT**
As low as 43°C, improving the power generation efficiency
- Easy transportation and installation**
Original design making it far less costly for transportation and installation
- Customization**
Customization for various scenarios, high additional value
- Superior Low Irradiance Performance**
Excellent low irradiance performance, increase power generation in low-light conditions like mornings, evenings and cloudy days

Maximum Power Output	Maximum Module Efficiency	Power Output Tolerance
475W	20.8%	0~+5W

Product and Quality Certifications

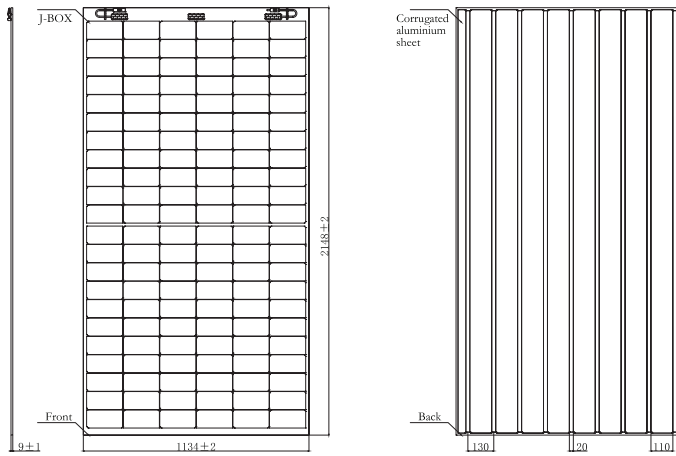
- IEC 61215, IEC 61730
- ISO 9001: Quality Management System
- ISO 14001: Environment Management System
- ISO 45001: Occupational Health and Safety Management System



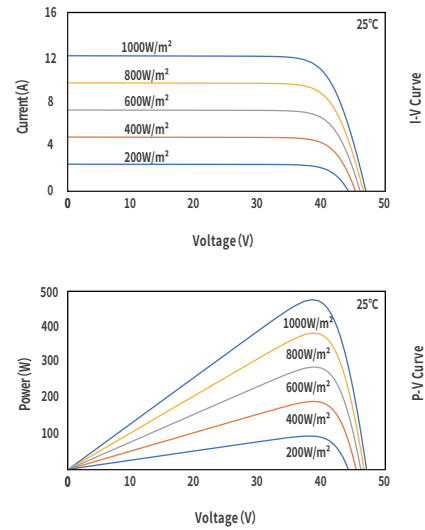
Leading product and power warranty

-2.50% 1st-year Degradation -0.50% Annual Degradation 12 Materials and workmanship warranty 25 Linear power warranty

Engineering Drawing (mm)



Characteristic Curves(470W)



Electrical Parameters (STC *)

Nominal Max. Power(Pmax/W)	455	460	465	470	475
Open Circuit Voltage(Voc/V)	45.50	45.65	45.79	45.93	46.06
Short Circuit Current(Isc/A)	12.67	12.76	12.85	12.93	13.02
Operating Voltage(Vmp/V)	37.72	37.87	38.01	38.15	38.28
Operating Current(Imp/A)	12.06	12.15	12.24	12.32	12.41
Efficiency(%)	19.9	20.1	20.3	20.6	20.8

STC * : Irradiance = 1000 W/m², Cell Temperature = 25°C, AM = 1.5
Test condition is based on the front side

Mechanical Parameters

Cell Type	P Type
Module Size	2148×1134×9mm
Module Thickness	9mm
Module Weight	10.2Kg
Output Cable	4mm ² , cable length 250mm (can be customized)
Connector	MC4 Similar
Junction Box	IP68, 3 bypass diodes
Frame	No Frame

Electrical Parameters (NMOT *)

Nominal Max. Power(Pmax/W)	341.7	345.5	349.2	353.0	356.7
Open Circuit Voltage(Voc/V)	43.35	43.50	43.63	43.76	43.89
Short Circuit Current(Isc/A)	10.21	10.28	10.35	10.42	10.49
Operating Voltage(Vmp/V)	35.16	35.30	35.43	35.57	35.69
Operating Current(Imp/A)	9.72	9.79	9.86	9.93	9.99

NMOT *: Irradiance = 800 W/m², Ambient Temperature = 20°C, AM = 1.5,
Wind Speed = 1 m/s
Test condition is based on the front side

Operating Parameters

Max. System Voltage	DC1500V
Power Tolerance	0 ~ +5 W
Operating Temperature	-40°C ~ +85°C
Max. Fuse Rated Current	22A
Static Load	Front 5400Pa, Back 2400Pa

Temperature Coefficients

Short Circuit Current(Isc)	+0.038%/°C
Open Circuit Voltage(Voc)	-0.262%/°C
Nominal Max. Power(Pmax)	-0.341%/°C
NMOT	43±2°C

Packing Data

Packing Type	20'GP	40'HQ
Piece/Pallet	54	54
Pallet/Container	8	18
Piece/Container	432	972