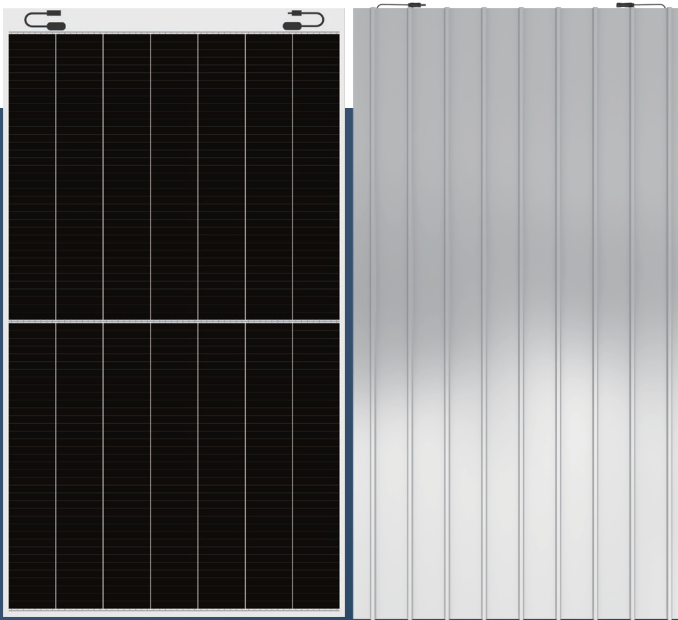


Lightweight High Density Module DAS-LOJP

415W~430W



Key Features

- Lightweight**
 Optimized composite materials, 60% lighter at the same power
- Flexible**
 Flexional encapsulating and patent materials
- Excellent Appearance and Performance**
 Esthetics module design, no flare effect, "0" risk of micro crack
- Easy transportation and installation**
 Original design making it far less costly for transportation and installation
- Customization**
 Customization for various scenarios, high additional value
- Superior Low Irradiance Performance**
 Excellent low irradiance performance, increase power generation in low-light conditions like mornings, evenings and cloudy days

Maximum Power Output

430W

Maximum Module Efficiency

20.8%

Power Output Tolerance

0~+5W

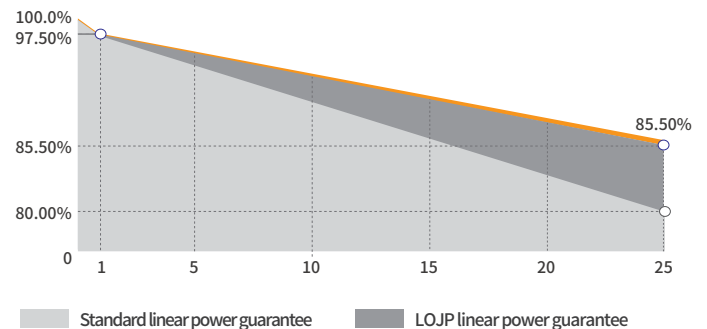
Product and Quality Certifications

IEC 61215, IEC 61730

ISO 9001: Quality Management System

ISO 14001: Environment Management System

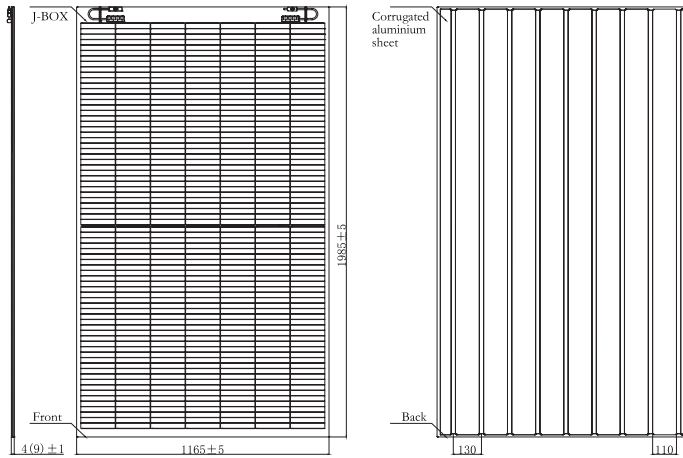
ISO 45001: Occupational Health and Safety Management System



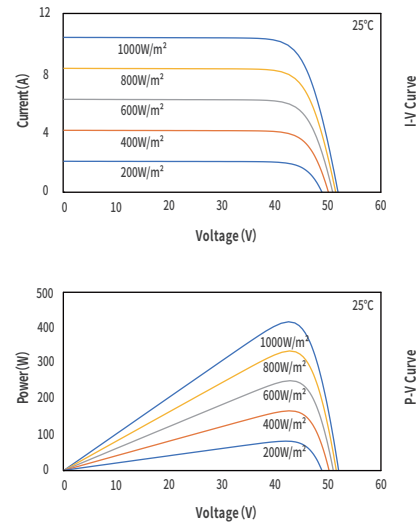
Leading product and power warranty

-2.50% 1st-year Degradation **-0.50%** Annual Degradation **10** Years materials and workmanship warranty **25** Years linear power warranty

Engineering Drawing (mm)



Characteristic Curves(420W)



Electrical Parameters (STC *)

Nominal Max. Power(Pmax/W)	415	420	425	430
Open Circuit Voltage(Voc/V)	50.40	50.45	50.50	50.55
Short Circuit Current(Isc/A)	10.51	10.58	10.65	10.72
Operating Voltage(Vmp/V)	41.71	41.91	42.11	42.31
Operating Current(Imp/A)	9.95	10.03	10.10	10.17
Efficiency(%)	20.0	20.3	20.5	20.8

STC * : Irradiance = 1000 W/m², Cell Temperature = 25°C, AM = 1.5
Test condition is based on the front side

Electrical Parameters (NMOT *)

Nominal Max. Power(Pmax/W)	311.7	315.7	319.4	323.2
Open Circuit Voltage(Voc/V)	48.04	48.09	48.14	48.18
Short Circuit Current(Isc/A)	8.48	8.54	8.59	8.65
Operating Voltage(Vmp/V)	38.82	39.01	39.19	39.38
Operating Current(Imp/A)	8.03	8.09	8.15	8.21

NMOT *: Irradiance = 800 W/m², Ambient Temperature = 20°C, AM = 1.5,
Wind Speed = 1 m/s
Test condition is based on the front side

Temperature Coefficients

Short Circuit Current(Isc)	+0.048%/°C
Open Circuit Voltage(Voc)	-0.26%/°C
Nominal Max. Power(Pmax)	-0.340%/°C
NMOT	43 ± 2°C

Mechanical Parameters

Cell Type	P Type
Module Size	1985 × 1165 × 4(9)mm
Module Thickness	4(9)mm
Module Weight	9.9(9.7)Kg
Output Cable	4mm ² , cable length 250mm (can be customized)
Connector	MC4 compatible
Junction Box	IP68, 2 bypass diodes
Back Color	Black / White

Operating Parameters

Max. System Voltage	DC1500V
Power Tolerance	0 ~ +5 W
Operating Temperature	-40°C ~ +85°C
Max. Fuse Rated Current	18A
Front Static Load	Snow load 5400Pa, Wind load 2400Pa

Packing Data

Packing Type	20'GP	40'HQ
Piece/Pallet	60(56)	60(56)
Pallet/Container	8(8)	18(18)
Piece/Container	480(448)	1080(1008)